

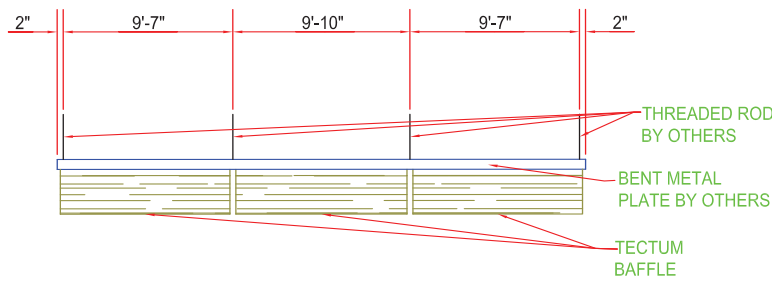
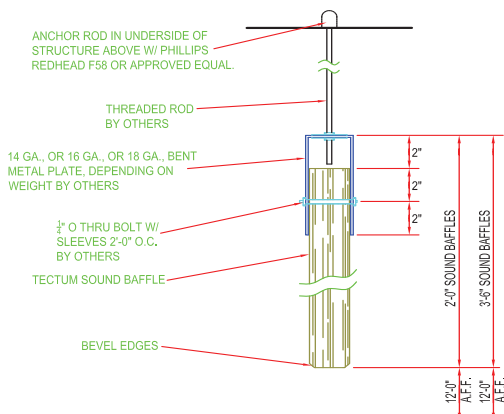


Tectum panels are well known for sound absorbing qualities as demonstrated in two installations that use the panels as both very attractive decorative elements and as very effective sound baffles.

The installation on the left is an open air application featuring custom-shaped baffles in iFly Indoor Skydiving. The hanging baffle installation photo, above right, shows a unique and very effective sound absorbing application in the Aquatic Ecosystems - Biological Sciences Building at University of British Columbia.

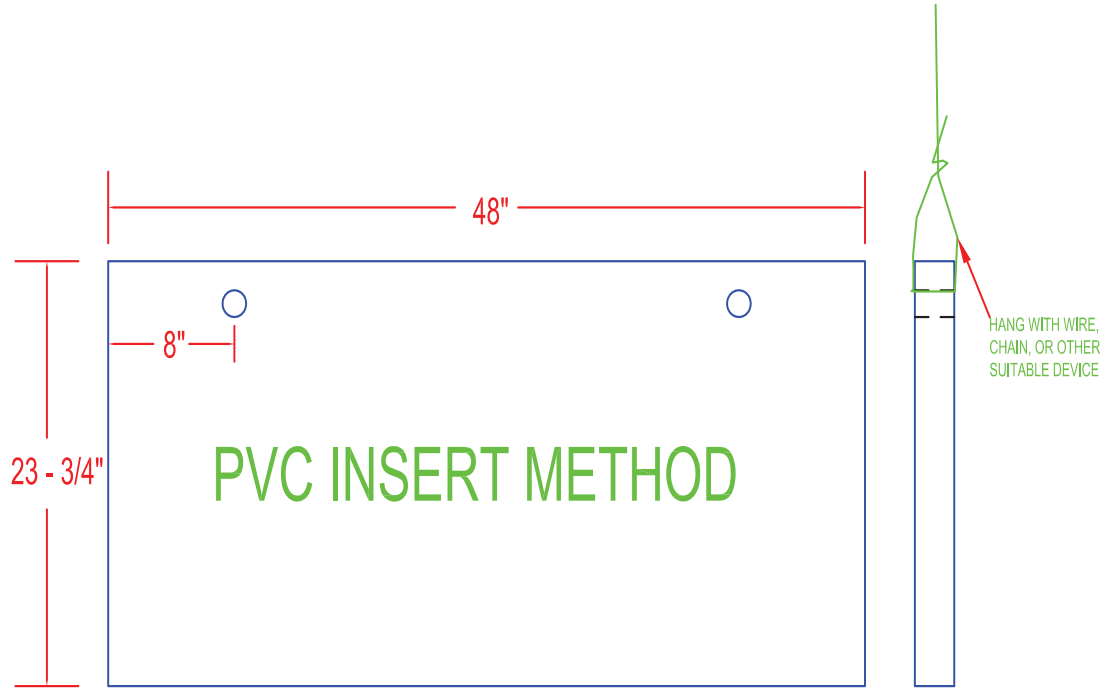
Below are two methods of installing Tectum Hanging Baffles. Tectum Hanging Baffles should not exceed lengths of 4' when using the Typical Baffle Hanging Method. For lengths greater than 4', the Tectum Sound Baffle Application must be used:

TECTUM SOUND BAFFLE APPLICATION



Recommended Application for all Tectum Hanging Baffles.

TYPICAL BAFFLE HANGING METHOD



Caution: Tectum panels are wood and subject to bend and bow when not mechanically fastened. Tectum Inc. does not recommend baffles in lengths greater than 4'.

TECTUM™ SOUND BAFFLES

SOUND ABSORPTION DATA (SABINS PER UNIT)

OCTAVE BAND CENTER FREQUENCY, HZ.

| THICKNESS | 125 | 250 | 500 | 1000 | 2000 | 4000 | AVG. |
|---|------|------|------|------|------|------|------|
| <u>2 ROWS OF 3 PANELS EACH, HUNG 4' APART AND 4" O.C.</u> | | | | | | | |
| 2" 23 ³ / ₄ " X 48" | 1.8 | 2.5 | 3.6 | 5.2 | 9 | 9.8 | 5.3 |
| <u>2 ROWS OF 3 PANELS EACH, HUNG 6' APART AND 6" O.C.</u> | | | | | | | |
| 2" 23 ³ / ₄ " X 48" | 1.9 | 2.6 | 3.8 | 5.6 | 9.4 | 10.3 | 5.6 |
| <u>2 ROWS OF 3 PANELS EACH AND 2 ROWS OF 2 PANELS EACH, HUNG 1' APART AND 5" O.C.</u> | | | | | | | |
| 1" 23 ³ / ₄ " X 48" | 1.62 | 1.35 | 2.36 | 3.81 | 4.76 | 6.54 | 3.41 |
| <u>2 ROWS OF 3 PANELS EACH AND 2 ROWS OF 2 PANELS EACH, HUNG 2' APART AND 5" O.C.</u> | | | | | | | |
| 1" 23 ³ / ₄ " X 48" | .95 | 1.63 | 2.32 | 3.92 | 5.18 | 7.37 | 3.56 |
| <u>2 ROWS OF 3 PANELS EACH AND 2 ROWS OF 2 PANELS EACH, HUNG 3' APART AND 5" O.C.</u> | | | | | | | |
| 1" 23 ³ / ₄ " X 48" | 1.01 | 1.44 | 2.32 | 4.05 | 5.16 | 7.21 | 3.53 |