

May 2016

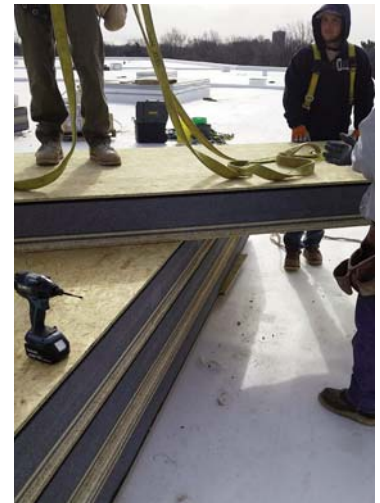
TECTUM Inc. • P.O. Box 3002 • Newark, OH 43058 • www.tectum.com • 1-888-977-9691



Tectum Lifting Plates can be used to safely lift and move Tectum Composite Roof Deck Panels on the job site. Mechanically attached into the OSB portion of the composite panels, these plates make it easier than ever to maneuver panels in the field.

Tectum Lifting Plates are 1/8" x 8" x 8" Steel.

1. Use one 1.5" long #10 screw (Fyb=80,000 psi) in each hole of the lifting plate. (min of 16 screws/plate).
2. Do not overdrive the screws. Doing so will strip the threads in the wood and cause the fasteners to lose its holding strength. If a screw is overdriven, remove all screws from the lifting plate, reposition the plate and re-screw through each hole.
3. Place plates evenly to balance and distribute the load.
4. Attach strapping and lift into place.
5. Maximum weight capacity of one plate is 500 lbs.



Safety Procedures

Only attach to sound wood which has not been affected by moisture.

Always use the safety clips to secure the bolt.

Never stand under an object which is being lifted with the lifting plates.

Always use two or more lifting plates per panel.

Only attach to O.S.B. or plywood (minimum thickness of 7/16")