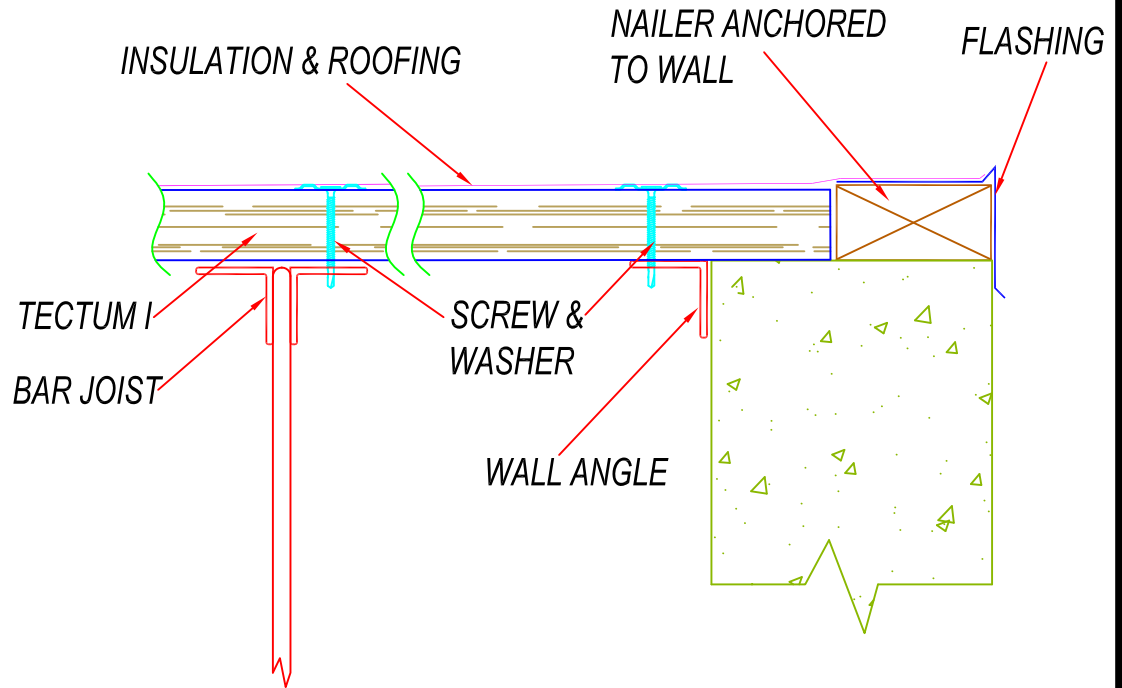
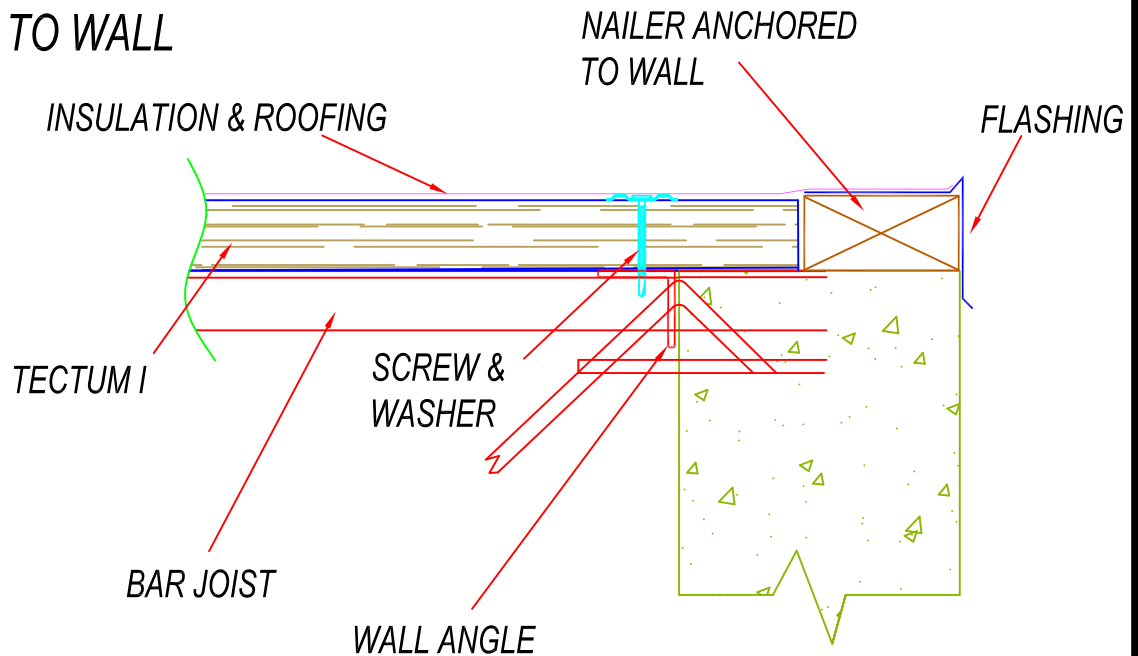


TECTUM I FLUSH EAVE DETAIL

JOIST PARALLEL TO WALL



JOIST RIGHT ANGLE TO WALL



NOTE:
 PANEL CAN BE
 SCREWED TO
 MASONRY WALL
 INSTEAD OF ANGLE. IT
 IS NOT PRACTICAL TO
 SCREW THROUGH A
 PLATE INTO MASONRY.

TECTUM I FLUSH EAVE

DETAIL NUMBER:

2008

SCALE : NTS

Revised: 03/24/2016

TECTUM_{INC}

The Noise Control Solution