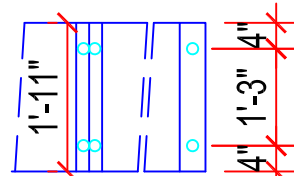
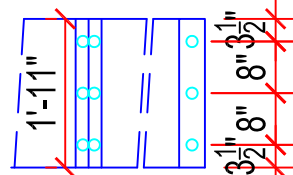


STANDARD SCREW SPACING FOR TECTUM PLANK SYSTEMS

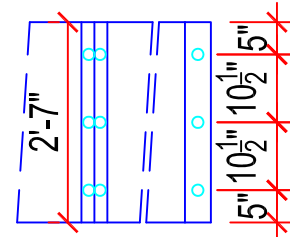
THE LOCATION OF ATTACHMENT SCREWS FOR TECTUM ROOF DECK PRODUCTS IS OFTEN VARIED. THIS DRAWING GIVES TECTUM INC. RECOMMENDED LOCATIONS. IT SHOULD BE NOTED THAT THE SCREWS ARE NOT PLACED AT THE EDGE OF THE PANELS BUT ARE SPACED IN FROM THE EDGE DEPENDING ON THE WIDTH OF THE PANELS AND THE NUMBER OF SCREWS PER JOIST. SPECIAL APPLICATIONS MAY REQUIRE SOME MODIFICATION OF THE SPACING SHOWN.



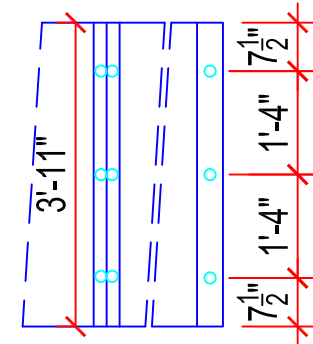
TWO SCREWS PER JOIST



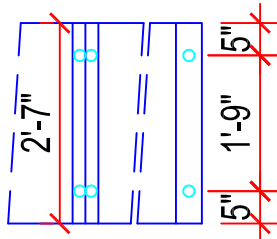
THREE SCREWS PER JOIST



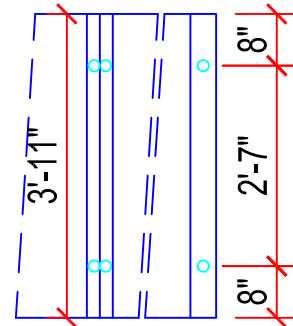
THREE SCREWS PER JOIST



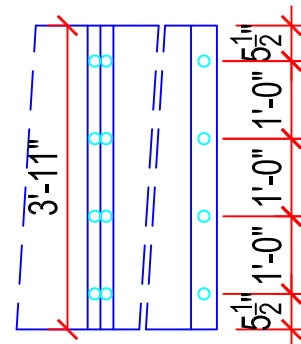
THREE SCREWS PER JOIST



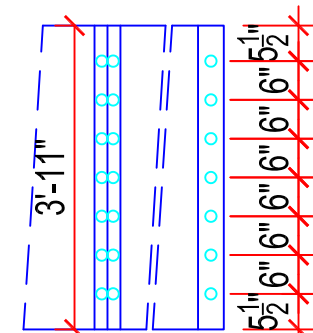
TWO SCREWS PER JOIST



TWO SCREWS PER JOIST



FOUR SCREWS PER JOIST



SEVEN SCREWS PER JOIST

FOR USE WITH ALL TECTUM SCREW AND WASHER ASSEMBLIES FOR TECTUM I, III, E, E-N AND NS PLANK AND WAFERHEAD SCREWS FOR TECTUM III, E, E-N, V AND NS PLANK.

SCREW SPACING

DETAIL NUMBER:

2022

SCALE : NTS

Revised: 03/28/2016

TECTUM^{INC.}

The Noise Control Solution